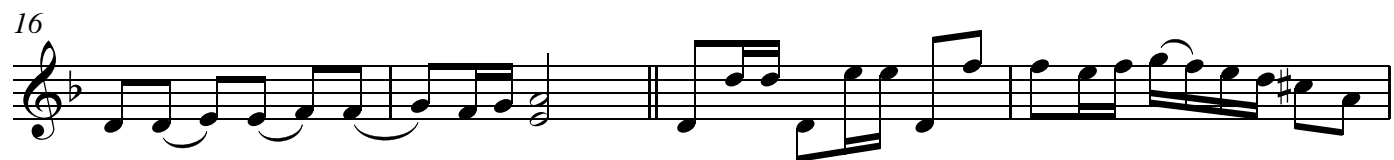
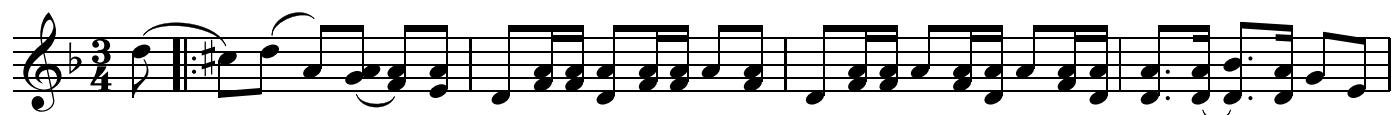


Julpolska efter Pehr H rberg

Best in A-bas
Efter Karin H glund, FG 82

BlueRoseMusic.org (#1677)
Printed by Karen Myers



Musical score for a piece in 3/4 time, featuring a key signature of one flat (Bb). The score consists of eight staves of music. The first staff shows a treble clef and a key signature of one flat. The second staff begins with a double bar line and a key signature change to one sharp (F#). The third staff includes first and second endings. The fourth staff starts with a double bar line and a key signature change to one flat. The fifth staff continues the melody. The sixth staff features a key signature change to one sharp. The seventh staff has a key signature change to one flat. The eighth staff concludes the piece with a double bar line.